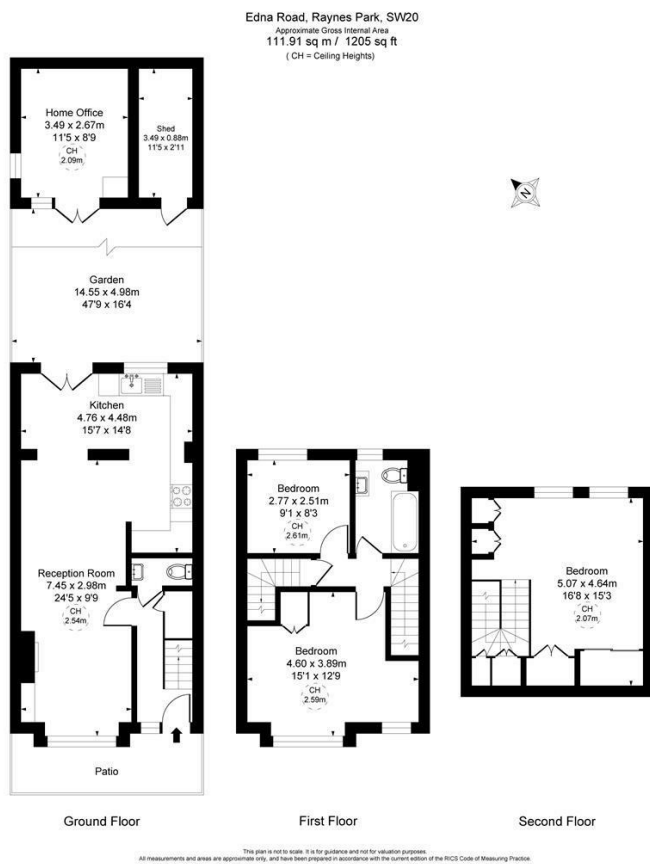


**Edna Road
Raynes Park, SW20 8BT**

£925,000 Freehold



This attractive 1,205 sqft THREE DOUBLE BEDROOM Edwardian, brick fronted Apostle house has superb open plan ground floor with modern fitted kitchen, bespoke designed loft extension and a fantastic 47'9 ft Rear garden with home office. Perfectly located for both Raynes Park and Wimbledon Chase stations and shops.



- Three Double Bedroom - 1,205 sqft
- Attractive Brick Fronted Edwardian Apostle House
- Large Garden with Home Office
- Superb Open Plan Ground Floor with Modern Kitchen
- Downstairs WC and Modern Bathroom
- Bespoke Designed Master Bedroom with Storage
- Close to Raynes Park Station and Shops
- Close to Wimbledon Chase Station and Shops
- EPC - TBC
- Council Tax Band - TBC

Energy Efficiency Rating		
Very energy efficient - lower running costs	Current	Potential
A (91-100)		84
B (81-90)		
C (69-80)	70	
D (55-68)		
E (39-54)		
F (21-38)		
G (1-20)		
Not energy efficient - higher running costs		
England & Wales		
EU Directive 2002/91/EC		

For Free Mortgage Quote and Best Mortgage Rates, call Ellisons Mortgage Advisor on 0208 944 9595



Although these particulars are believed to be correct, their accuracy is not guaranteed and they do not form part of any contract.

Celebrating 30 years
of successful Sales and
Lettings in Merton

